

Евг. Шилин

Школа игры на блокфлейте



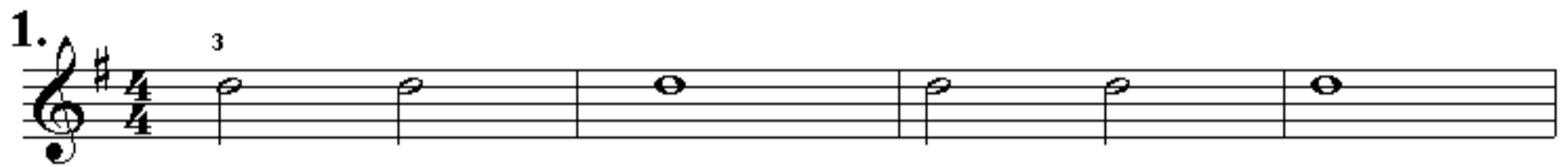
Часть 1
Для начинающих
Сопрано

2008

БЛОКФЛЕЙТА СОТРАНО

Начальные упражнения.

1.



2.



3.



4.



5.

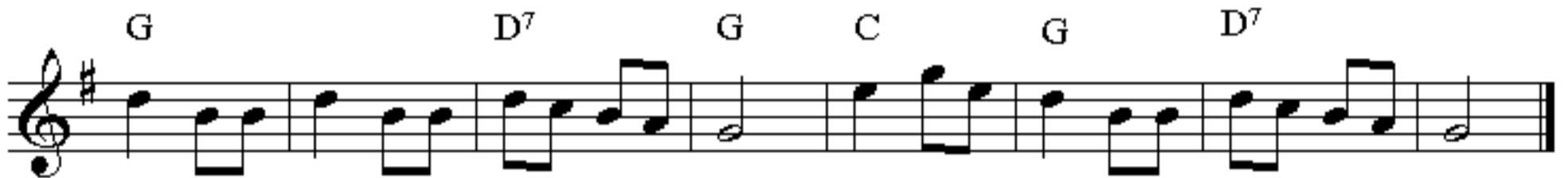


Гамма Соль-мажор



Лёгкие пьесы.

1. ЁЛОЧКА



2. МАЛЕНЬКАЯ ТПОЛЬКА



3. INSY, WINSY, SPIDER



4. OLD MACDONALD HAD



5. HAPPY BIRTHDAY TO YOU

Musical notation for "Happy Birthday to You" in 3/4 time. The melody is written on a treble clef staff. The key signature is C major. The first line contains the first six measures, and the second line contains the last two measures. Chords are indicated above the notes: C, G7, C, C7, F, C, G7, C.

6. DOWN IN DEMERARA

Musical notation for "Down in Demerara" in 4/4 time. The melody is written on a treble clef staff. The key signature is C major. The first line contains the first four measures, the second line contains the next four measures, and the third line contains the final two measures. Chords are indicated above the notes: C, G7, C, C, G7, C, G7, C.

7. CHILDREN'S SONG

Musical notation for "Children's Song" in 2/4 time. The key signature is A major (two sharps). The melody is written on a treble clef staff. The first line contains the first six measures, and the second line contains the last two measures. Chords are indicated above the notes: A, D, A, D, A, E7, A, A, D, A, E7, A, D, E7, A.

8. CLEMENTINE

Musical notation for "Clementine" in 3/4 time. The key signature is C major. The melody is written on a treble clef staff. The first line contains the first six measures, and the second line contains the last two measures. Chords are indicated above the notes: C, G7, C, G, G7, C.

9. СВЕТИТ МЕСЯЦ

5

Musical score for "СВЕТИТ МЕСЯЦ" in G major, 4/4 time. The score consists of four staves of music. The first staff begins with a treble clef, a key signature of one sharp (F#), and a 4/4 time signature. The melody is written in a simple, folk-like style with eighth and quarter notes. Chords are indicated above the staff: C, G, C, G. The second staff continues the melody with chords D, G, D, G. The third staff has chords C, G, C, G7. The fourth staff concludes the piece with chords D, G, D, D7, G.

10. ПЕРЕТЁЛОЧКА

Musical score for "ПЕРЕТЁЛОЧКА" in G minor, 2/4 time. The score consists of two staves of music. The first staff begins with a treble clef, a key signature of two flats (Bb, Eb), and a 2/4 time signature. The melody is written in a simple, folk-like style with eighth and quarter notes. Chords are indicated above the staff: Dm, Gm, A7, Dm. The second staff continues the melody with chords Gm, Bb7, A7, Dm.

11. МЫ ИДЁМ ПО УРУГВАЮ

Musical score for "МЫ ИДЁМ ПО УРУГВАЮ" in G major, 4/4 time. The score consists of two staves of music. The first staff begins with a treble clef, a key signature of one sharp (F#), and a 4/4 time signature. The melody is written in a simple, folk-like style with eighth and quarter notes. Chords are indicated above the staff: Am, E7. The second staff continues the melody with chords E7, Am.

12. ВО ПОЛЕ БЕРЁЗА СТОЯЛА

Musical score for "ВО ПОЛЕ БЕРЁЗА СТОЯЛА" in G major, 2/4 time. The score consists of two staves of music. The first staff begins with a treble clef, a key signature of one sharp (F#), and a 2/4 time signature. The melody is written in a simple, folk-like style with eighth and quarter notes. Chords are indicated above the staff: Am, C, D, F, E7, Am, Am, C, D, F, E7, Am. The second staff continues the melody with chords E7, D, F, E7, Am, E7, D, F, E7, Am.

13. ПО ДОНУ ГУЛЯЕТ

Musical score for "13. ПО ДОНУ ГУЛЯЕТ" in D major, 3/4 time. The score consists of two staves. The first staff contains the melody with chords D, A7, D, G, and D. The second staff contains the accompaniment with chords A7, D, G, D, A7, and D.

14. ПОЛЬКА

Musical score for "14. ПОЛЬКА" in A minor, 2/4 time. The score consists of two staves. The first staff contains the melody with chords Am, Dm, E7, and Am. The second staff contains the accompaniment with chords Am, Dm, E7, and Am.

15. АВГУСТИН

Musical score for "15. АВГУСТИН" in D major, 3/4 time. The score consists of three staves. The first staff contains the melody with chords G, D, and G. The second staff contains the accompaniment with chords D7, G, D7, G, and D7. The third staff contains the accompaniment with chords G, D7, and G.

16. МОЙ КОСТЁР

Musical score for "16. МОЙ КОСТЁР" in A minor, 3/8 time. The score consists of two staves. The first staff contains the melody with chords Am, Dm6, E7, and Am. The second staff contains the accompaniment with chords Am, A7, Dm, Am, E7, and Am.